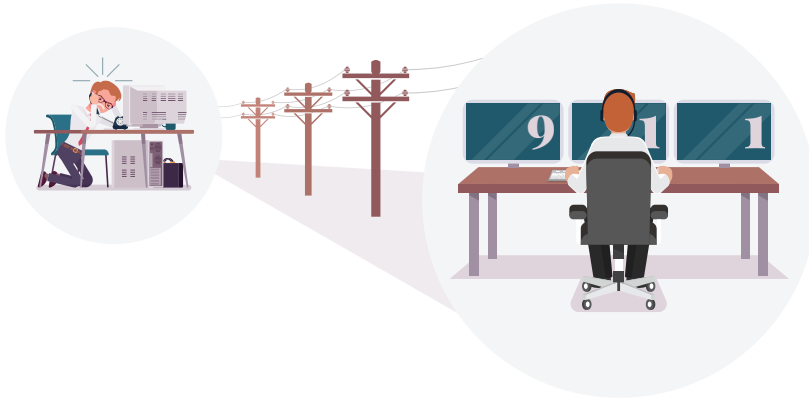
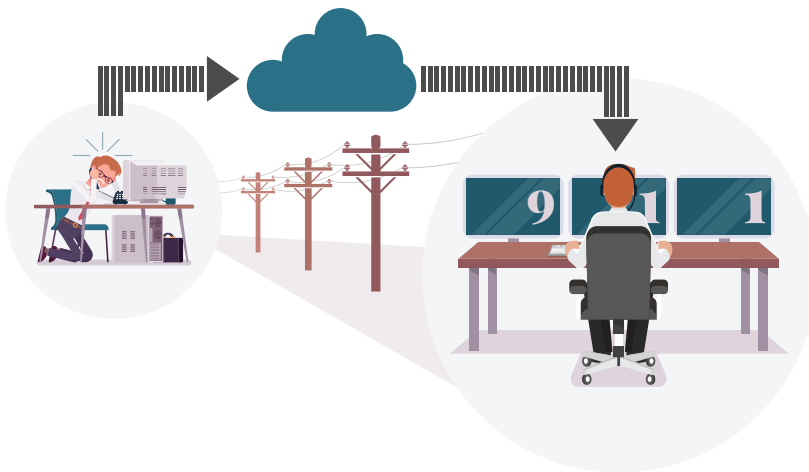


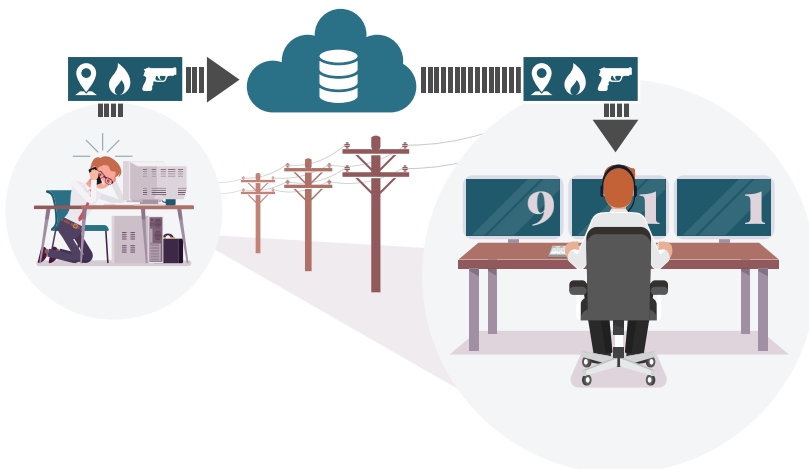
Bringing Enterprise 911 Into the 21st Century



The current 911 system was built 20+ years ago for a fixed communications architecture that doesn't account for mobility, limits the precision and variety of data, and drives up risk and service cost for enterprises.



Until Next-Generation 911 (NG911) networks come online, "over-the-top" (OTT) options exist to mitigate risk and reduce cost, but require the right enterprise communications solution to leverage them.



Intelligent enterprise network data can circumvent the legacy environment OTT and be shared with 911 personnel today. We can't afford to wait for NG911 to be built.