



Configuring the Avaya™ 3606 Wireless Telephone with Compatible 802.11b Access Points from Avaya and Other Vendors – Issue 1.0

Abstract

These Application Notes describe the setup and configuration of an Avaya™ 3606 Wireless Telephone and Avaya™ Wireless Voice Priority Processor (AVPP) to interoperate with multiple vendor Access Points: Avaya™ AP-II, Avaya™ AP-III, Cisco Aironet 340, Symbol Spectrum 24, and Enterasys RoamAbout 2000.

1. Introduction

These Application Notes describe the setup and configuration of an Avaya™ 3606 Wireless Telephone and Avaya™ Wireless Voice Priority Processor (AVPP) to interoperate with multiple vendor APs: Avaya™ AP-II, Avaya™ AP-III, Cisco Aironet 340, Symbol Spectrum 24, and Enterasys RoamAbout 2000. A detailed illustration of the configurations tested, along with a list of test equipment is presented in these Application Notes.

Figure 1 represents the sample network environment, including the Avaya S8300 Media Server with Avaya G700 Media Gateway, and AVPP.

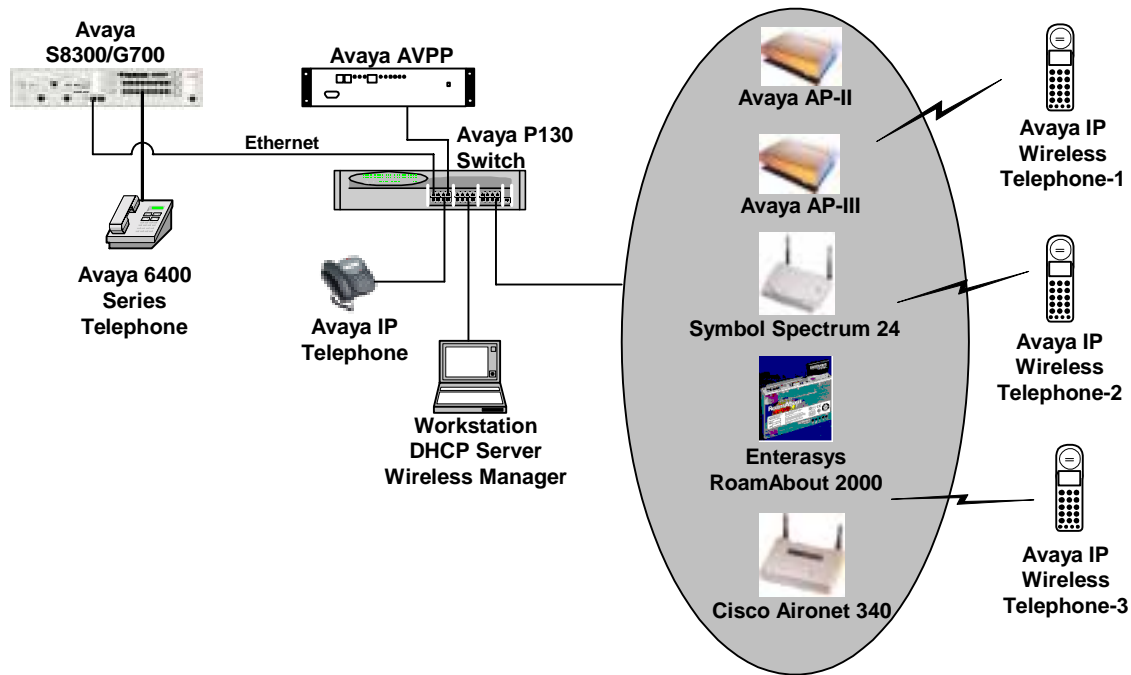


Figure 1: Network Configuration – Avaya S8300 Media Server and Avaya G700 Media Gateway

*Note: The IP addresses in the table below were used for the configuration shown in **Figure 1**.*

Device Name	IP Address	Comments
Avaya™ S8300 Media Server / Avaya G700 Media Gateway	192.16.6.2	Default Gateway is 192.16.6.1
Avaya P330 Stack Processor	192.16.6.3	
Media Gateway Processor (MGP)	192.16.6.4	
VoIP Module	192.16.6.5	

Device Name	IP Address	Comments
ICC		
Avaya™ 4620 IP Telephone 4620	192.16.6.101	
Workstation / DHCP Server / Wireless Manager	192.16.6.199	
Avaya™ Wireless Voice Priority Processor	192.16.6.151	
Avaya™ 3606 Wireless Telephones	DHCP/Static	Both methods were used in testing
Avaya™ AP-II	192.16.6.201	
Avaya™ AP-III	192.16.6.204	
Cisco Aironet 340	192.16.6.203	
Enterasys RoamAbout AP 2000	192.16.6.205	
Symbol Spectrum24	192.16.6.206	

Table 1 – IP address configuration for Figure 1

2. Equipment and Software Validated

Table 2 shows the software/firmware versions were used during the verification:

Devices	Version
Avaya MultiVantage™ Software - Avaya™ S8300 Media Server with Avaya™ G700 Media Gateway	R011x.01.2.065.3
Avaya™ 3606 Wireless Telephone	083.021 with CCMS firmware
Avaya™ Wireless Voice Priority Processor	32/21
Avaya™ P130 Workgroup Ethernet Switch	2.5.3
Avaya™ 4620 IP Telephone	def20r1_71
Avaya™ Wireless AP-III Access Point	V2.0.0
Avaya™ Wireless AP-II Access Point	V3.71
Cisco Aironet 340 Wireless Access Point	V8.52
Symbol Spectrum 24 Wireless Access Point	03.50-26
EnteraSys RoamAbout 2000	V01.02.08

Table 2 – Equipment & Software Validated

3. Configuring the Avaya S8300 Media Server and G700 Media Gateway

Steps	Description
1	Provision an extension for the Avaya 3606 Wireless Telephone by using the following command: <ul style="list-style-type: none"> • add station 45043
2	On the station screen <ul style="list-style-type: none"> • Provide the following information: <ul style="list-style-type: none"> ○ Type (must be phone type 4606) ○ Name ○ Security Code • Save the settings. <pre style="background-color: #f0f0f0; padding: 10px;"> add station 45043 Page 1 of 3 STATION Extension: 45043 Lock Messages? n BCC: 0 Type: 4606 Security Code: * TN: 1 Port: S00006 Coverage Path 1: COR: 1 Name: IP-wireless-1 Coverage Path 2: COS: 1 Hunt-to Station: STATION OPTIONS Loss Group: 2 Personalized Ringing Pattern: 1 Message Lamp Ext: 45043 Speakerphone: 2-way Mute Button Enabled? y Display Language: english Media Complex Ext: IP SoftPhone? N </pre> <p><i>Note: This step should be repeated to configure all Avaya 3606 Wireless Telephones.</i></p>
3	To set up the Codec, use the following command. <ul style="list-style-type: none"> • change codec 1 <pre style="background-color: #f0f0f0; padding: 10px;"> change ip-codec-set 1 Page 1 of 1 IP Codec Set Codec Set: 1 Audio Silence Frames Packet Codec Suppression Per Pkt Size(ms) 1: G.711MU n 2 20 2: 3: 4: 5: </pre>

4. Configuring the Avaya Wireless Voice Priority Processor

Steps	Description
1	Using a console cable, connect the AVPP to the PC.
2	<p>Start a HyperTerminal session to AVPP.</p> <ul style="list-style-type: none"> • Bits per second 9600 • Data bits 8 • Parity None • Stop bits 1 • Flow control None
3	<p>Provide the User Name and Password to access AVPP</p> <ul style="list-style-type: none"> • The Gateway Connection Selection window will be displayed. <pre> NetLink SVP-II System Hostname: [slnk_00d07e], Address: 192.16.6.151 System Status SVP-II Configuration Network Configuration Change Password Exit Enter=Select X=Exit Use Arrow Keys to Move Cursor </pre> <ul style="list-style-type: none"> • Select Network Configuration and press Enter.
4	<p>The Network Configuration window will be displayed.</p> <pre> Network Configuration Hostname: [slnk_00d07e], Address: 192.16.6.151 Ethernet Address (fixed): 00:90:7A:00:D0:7E IP Address: 192.16.6.151 Hostname: slnk_00d07e Subnet Mask: 255.255.255.0 Default Gateway: 192.16.6.1 SVP-II TFTP Download Master: NONE Primary DNS Server: NONE Secondary DNS Server: NONE DNS Domain: NONE WINS Server: NONE Workgroup: WORKGROUP Syslog Server: NONE Maintenance Lock: N Enter=Change Esc=Exit Use Arrow Keys to Move Cursor </pre>

	<p>On the Network Configuration window:</p> <ul style="list-style-type: none"> • Provide the following information: <ul style="list-style-type: none"> ○ IP Address = 192.16.6.151 ○ Subnet Mask = 255.255.255.0 ○ Default Route = 192.16.6.1 • Press the Esc key to go back to the previous menu.
5	<p>On the NetLink SVP-II System window:</p> <ul style="list-style-type: none"> • Select SVP-II Configuration, and press Enter. <pre style="background-color: #f0f0f0; padding: 10px;"> NetLink SVP-II System Hostname: [slnk_00d07e], Address: 192.16.6.151 System Status SVP-II Configuration Network Configuration Change Password Exit Enter=Select X=Exit Use Arrow Keys to Move Cursor </pre>
6	<p>On the SVP-II Configuration window:</p> <ul style="list-style-type: none"> • Select Reset System, and press Enter. <p>This will reconfigure the AVPP with current settings.</p> <pre style="background-color: #f0f0f0; padding: 10px;"> SVP-II Configuration Hostname: [slnk_00d07e], Address: 192.16.6.151 Phones per Access Point: 5 SVP-II Mode: Netlink IP System Locked: N Maintenance Lock: N Reset System Enter=Change Esc=Exit Use Arrow Keys to Move Cursor </pre>

5. Configuring the Avaya 3606 Wireless Telephone

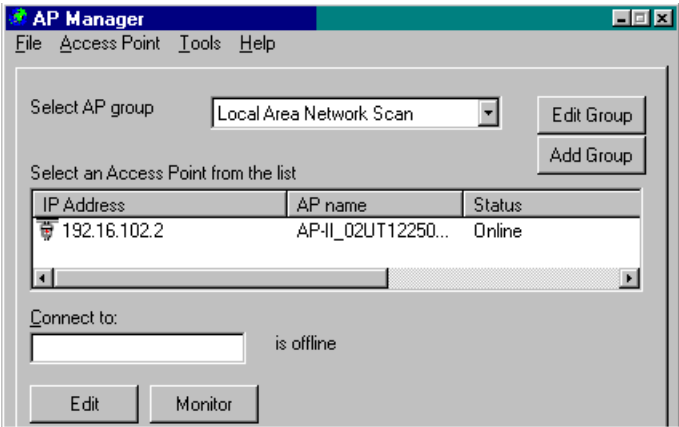
- The following assumptions are made:
 - AVPP is configured and located in the network.
 - The Avaya 3606 Wireless Telephone is set using the static IP Address.
 - The extensions for the Avaya 3606 Wireless Telephones were previously configured in the MultiVantage software.

Steps	Description
1	Configure the Avaya 3606 Wireless Telephone by Pressing the PWR and END buttons together. Release the PWR button first and then the END button.
2	Configure the IP address settings: <ul style="list-style-type: none"> • Click 0 for Edit. • Using the ◀ or ▶, select the type of IP Address (Static or DHCP) and click 0 for Select. • <u>For Static IP Address, do the following:</u> <ul style="list-style-type: none"> ○ Type an IP Address for the Avaya 3606 Wireless Telephone. ○ Click the END button to accept the value. ○ Using ▶, go to the Default Gateway screen. <ul style="list-style-type: none"> ▪ Click 0 for Select. ▪ Type an IP Address of the Default Gateway. ▪ Click the END button to accept the value. ○ Using ▶, go to the Subnet Mask screen. <ul style="list-style-type: none"> ▪ Click 0 for Select. ▪ Type the Subnet Mask. ▪ Click the END button to accept the value. ▪ Click the FCN button to go back to the previous menu level. ○ Using ▶, go to the Call Server IP screen. <ul style="list-style-type: none"> ▪ Click 0 for Select. ▪ Type the IP Address for the Call Server. ▪ Click the END button to accept the value. ▪ Click the FCN button to go back to the previous menu level. ○ Using ▶, go to the AVPP IP screen. <ul style="list-style-type: none"> ▪ Click 0 for Select. ▪ Type the IP Address for the AVPP. ▪ Click the END button to accept the value. ▪ Click the FCN button to go back to the previous menu level. • <u>For DHCP IP Address, do the following:</u> <ul style="list-style-type: none"> ○ From the IP Address screen, click 0 for Edit. ○ Using the ◀ or ▶, select the types of IP Address, DHCP, and click 0 for Select. ○ Click the FCN button to go back to the previous menu level.
3	Configure ESS method: <ul style="list-style-type: none"> • Using the ◀ or ▶, go to the ESS ID screen and click 0 for Edit. • The Current ESS ID screen will be displayed. <ul style="list-style-type: none"> ○ Using the ◀ or ▶, select the method of searching ESS ID. There are three methods, Learn Once, Learn Always, and Static Entry. ○ Select Static Entry and click 0 for Select.

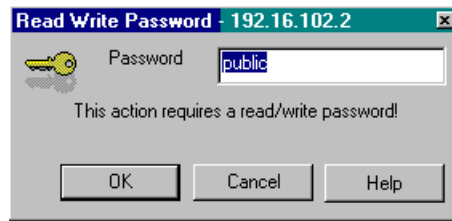
	<ul style="list-style-type: none"> ○ Type in ESS ID – This ID must be matched with the SSID value in the AP. ○ Click the END button to accept the value. ● Click the END button to accept the value and reconfigure the phone with the current values.
4	<p>Configure the extension password:</p> <ul style="list-style-type: none"> ● Using the ◀ or ▶, go to the Ext. screen and click 0 for Edit. <ul style="list-style-type: none"> ○ Provide the extension for the Avaya 3606 Wireless Telephone. ○ Click the END button to accept the value. ○ Click the FCN button to go back to the previous menu level. ● Using the ◀ or ▶, go to the Password screen and click 0 for Edit. <ul style="list-style-type: none"> ○ Provide the password to access the extension ○ Click the END button to accept the value. ○ Click the FCN button to go back to the previous menu level.

6. Configuring the Avaya Wireless AP-II

- The following assumptions are made:
 - AP and Client Managers are installed and functioning properly.
 - There is a known IP address for AP-II
(If not, set the AP-II to the factory default mode. The factory default IP address is 153.69.254.254/16)

Steps	Description
1	Configure an IP address of the workstation (wireless laptop) with AP and Client Manager. Make sure that the IP address of the workstation is in the same subnet as the AP-II.
2	<p>On the Start menu</p> <ul style="list-style-type: none"> ● Select Start → Programs → Avaya Wireless → AP Manager ● The AP Manager window will be displayed. <div style="text-align: center;">  </div> <ul style="list-style-type: none"> ● Click the AP-II from the list section ● Click the Edit button <p>The Read Write Password window will be displayed.</p>

3

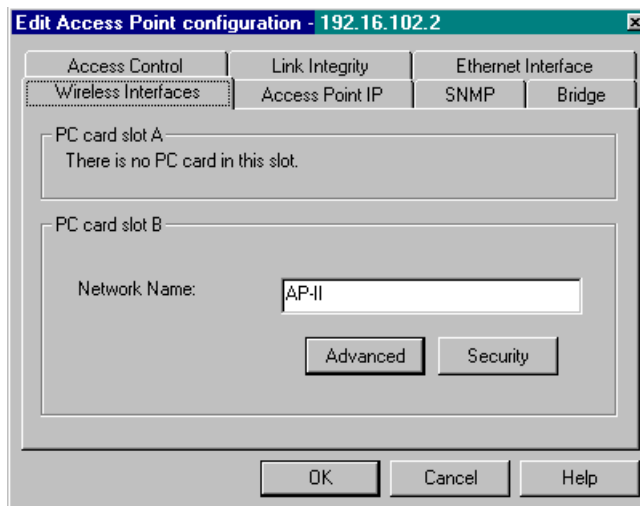


On the **Read Write Password** window

- Type in the **Password** (The default is “public”)
- Click **OK**

4

The **Edit Access Point Configuration** window will be displayed.



- Click the **Wireless Interfaces** submenu
 - Provide **Network Name**. **Network Name** will be used in the Client side, as **SSID**.
 - Click the **Advanced** button
 - Provide the following information:
 - **Distance between APs**
 - **Multicast Rate** (This rate has to be lower than 2 Mbps for Avaya 3606 Wireless Telephone to work.)
 - Click **OK**
 - Click the **Security** button (This step is need if WEP is going to be used.)
 - Check **Enable Encryption**
 - Type in **Encryption key**
 - Make sure **Encryption Data Transmission** has the appropriate key selected
 - Click **OK**
- Click the **Access Point IP** submenu

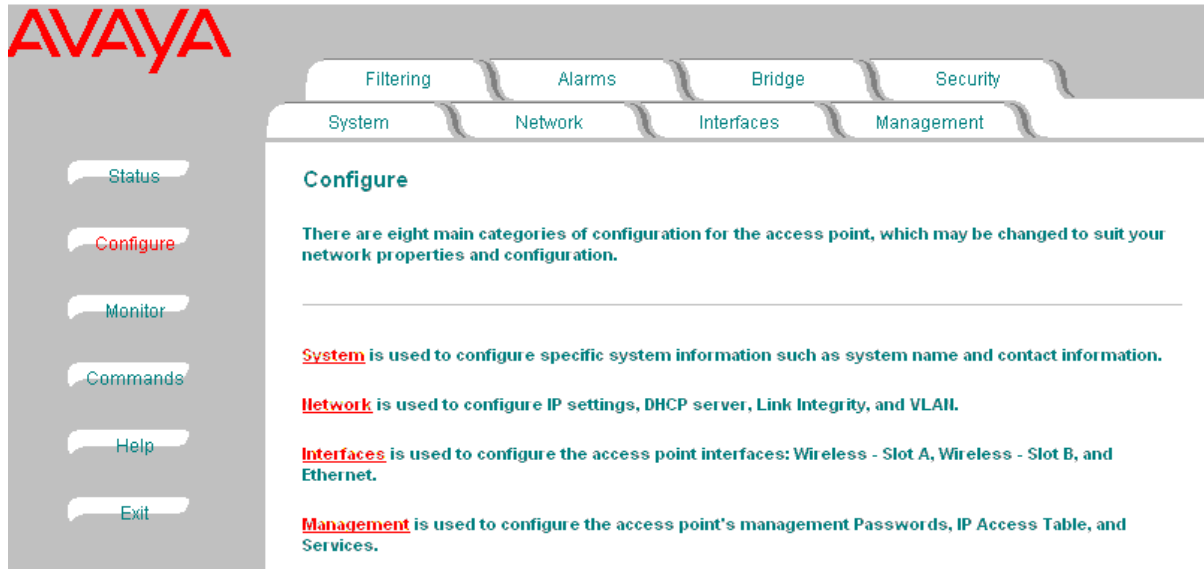
	<ul style="list-style-type: none"> ○ Provide the following information: <ul style="list-style-type: none"> ▪ Access Point IP Address = 192.16.102.1 ▪ Access Point Subnet Mask=255.255.255.0 ▪ Default Router IP=192.16.102.1 ▪ Click OK <p>When prompted for saving, Click Yes</p>
--	--

7. Configuring the Avaya AP-III

- The following assumptions are made:
 - Client Manager is installed and functioning properly.
 - There is a known IP address for the AP-III
(If not, set the AP-III to the factory default mode. The factory default IP address is 10.0.0.1/8)

Steps	Description
1	Configure an IP address for the workstation (wireless network interface card). Make sure that the IP address of the workstation is in the same subnet as the AP-III.
2	<p>Using the Web Browser, connect to the AP-III. Provide the following information:</p> <ul style="list-style-type: none"> • User Name and Password • Click OK. • The main window will be displayed. <div style="border: 1px solid gray; padding: 10px; margin: 10px 0;"> </div> <ul style="list-style-type: none"> • Click the Configure button

3

On the **Configure** window:

- Click the **Network** tab
 - Click **IP Configuration** submenu and provide the following information:
 - **IP Address Assignment Type**
 - **IP Address** of the AP-III = 192.16.6.204
 - **Subnet Mask** = 255.255.255.0
 - **Gateway IP Address** = 192.16.6.1
 - Click **OK**
- Click the **Interfaces** tab
 - Click **Wireless-A** (or **Wireless-B**) submenu and provide the following information:
 - **Network Name (SSID)** - **Network Name** will be used in the Client side, as **SSID**.
 - **Distance between APs**
 - **Multicast Rate** - This rate has to be lower than 2 Mbps for Avaya 3606 Wireless Telephone to work.
 - Click **OK**
- Click the **Security** tab
 - Click the Encryption submenu and provide the following information:
 - Check **Enable Encryption (WEP) for Slot A (or B)** – This will enable the WEP Encryption.
 - Provide the **Encryption key** – The default key type is ASCII text.
 - Select the right key ID for **Encrypt Data Transmissions using...**
 - Click **OK**


4

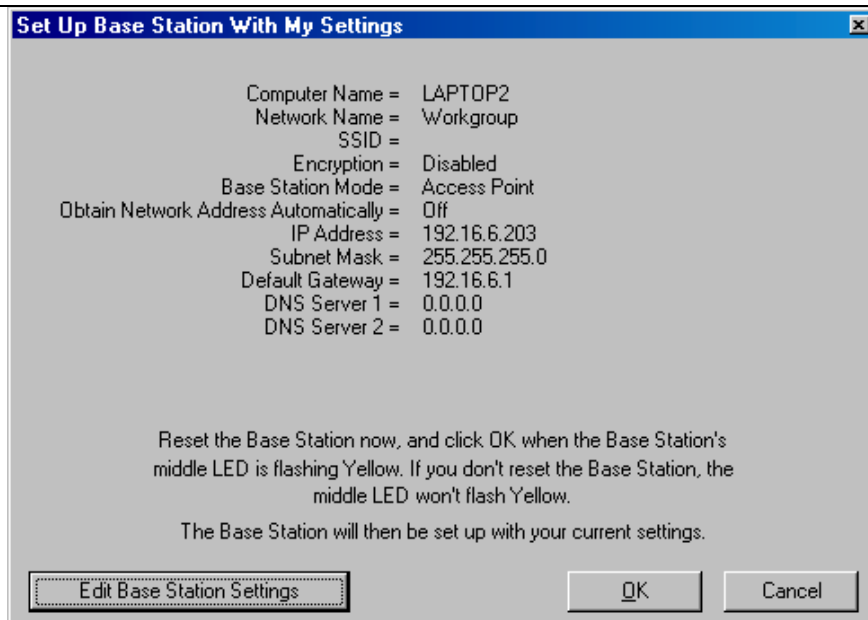
Click **Commands** on the main menu

- Click the **Reset** tab.
- Click **Reset** to reconfigure the AP-III with the current settings.

8. Configuring the Cisco Aironet 340

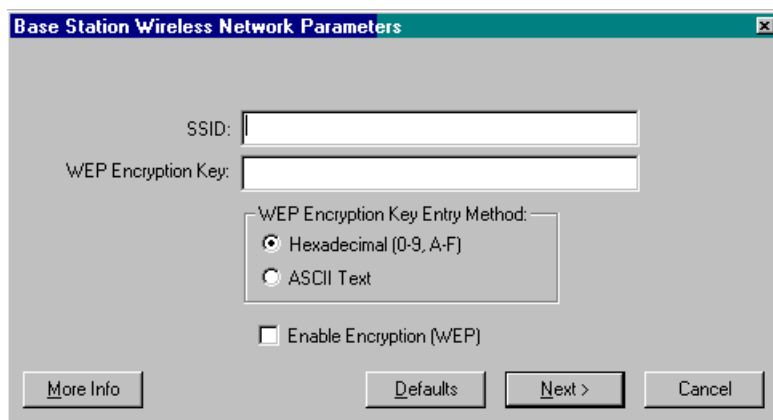
- The following assumptions are made:
 - The BSCU and Cisco Aironet 350 Wireless Card were used to configure the Cisco Aironet 340.
 - There is a known IP address for the Cisco Aironet 340 (If not, set the Cisco Aironet 340 to the factory default mode. The factory default IP address is 192.168.200.1/24)
 - The latest version of BSCU is installed from the Cisco Website and working properly.

Steps	Description
1	Configure an IP address of the workstation (wireless network interface card) with BSCU. Make sure that the IP address of the workstation is in the same subnet as the Cisco Aironet 340.
2	<p>On the Start menu</p> <ul style="list-style-type: none"> • Select Start → Programs → Cisco Systems Inc → Base Station Client Utility (BSCU) • The Base Station Client Utility window will be displayed. 
3	<p>On the Base Station Client Utility window</p> <ul style="list-style-type: none"> • Select Base Station → Set up Base Station... • The Set UP Base Station With My Settings window will be displayed.



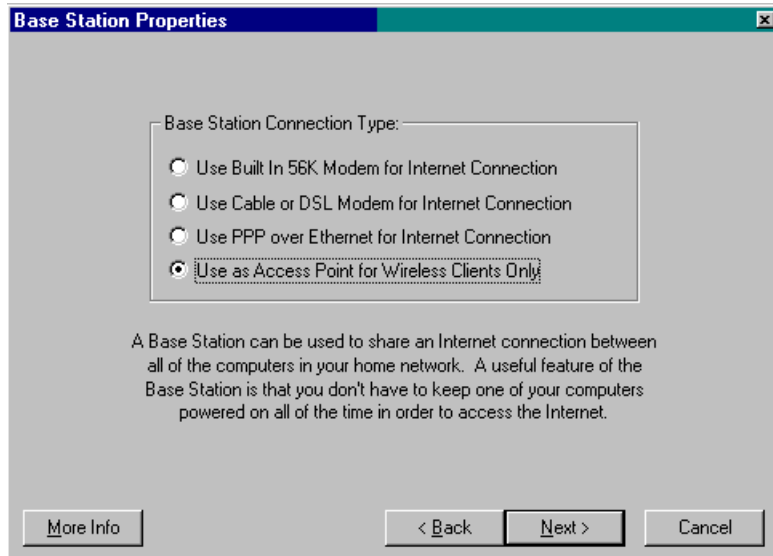
- Click **Edit Base Station Settings** button

4 On the **Base Station Wireless Network Parameters** window



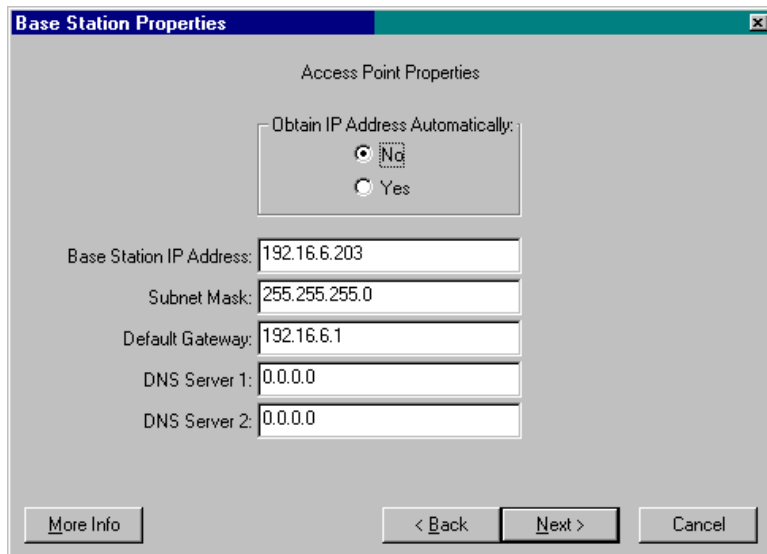
- Provide **SSID**. The SSID will be utilized during the client configuration.
- Provide **WEP Encryption Key** - This step is needed if WEP Encryption is going to be used.
- Select the **WEP Encryption Key Entry Method** to be used (Hexadecimal / ASCII Text)
- Click **Enable Encryption** - This step is need if WEP Encryption is going to be used.
- Click **Next**.
- The **Base Station Properties** window will be displayed.

5 On the **Base Station Properties** window



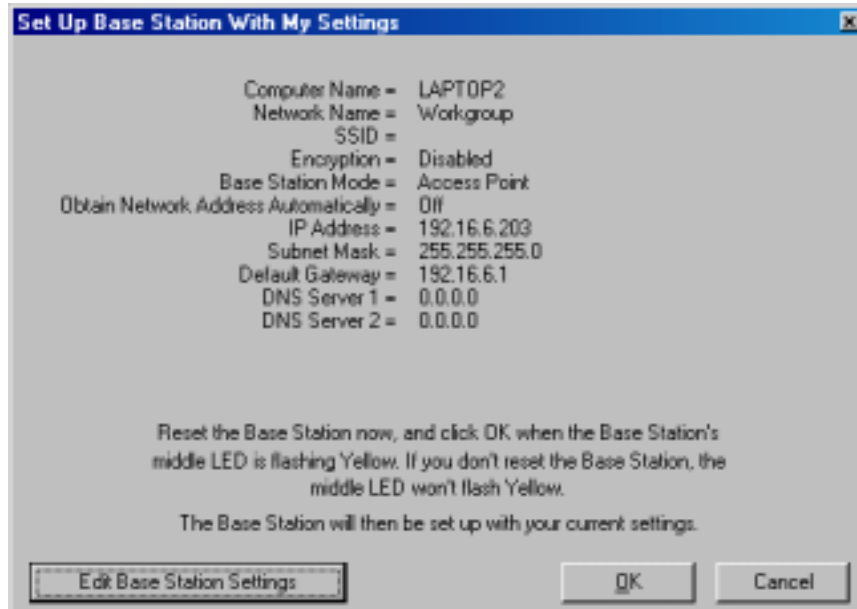
- Click **Use as Access Point for Wireless Clients Only**
- Click **Next**.
- The **Base Station Properties** window will be displayed.

6 On the **Base Station Properties** window



- Provide the following information:
 - Click **No** on **Obtain IP Address Automatically:**
 - **Base Station IP Address** = 192.16.6.203
 - **Subnet Mask** = 255.255.255.0
 - **Default Gateway** = 192.16.6.1
 - Click **Next**.

7

On the **Set Up Base Station With My Settings** window

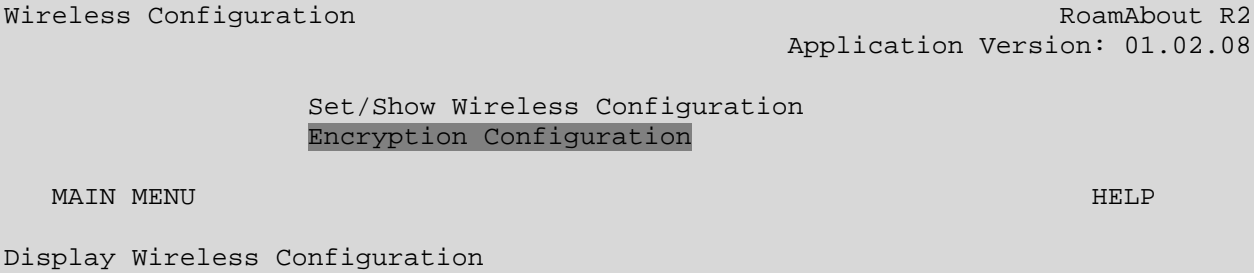
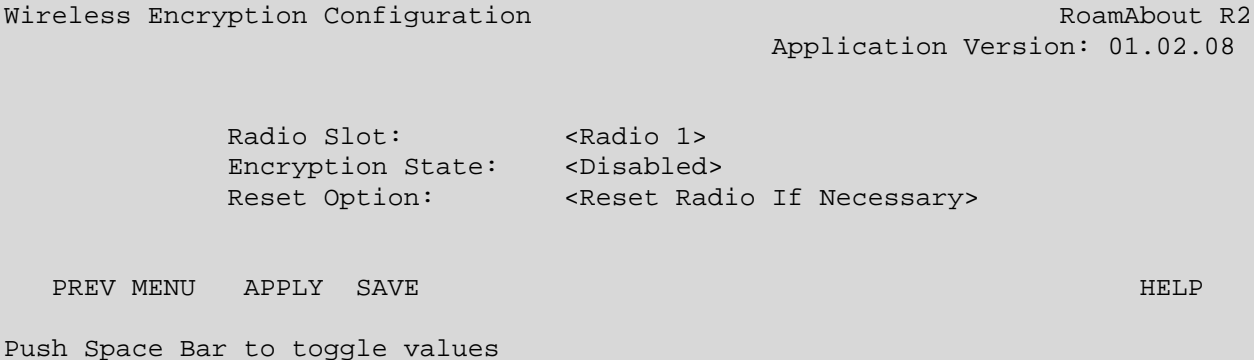
- Click **OK**. This will reset the AP with current configuration.

9. Configuring the Enterasys RoamAbout 2000

Steps	Description
1	<p>Using a console cable, connect the RoamAbout to the PC.</p> <p>Start a HyperTerminal session to the RoamAbout.</p> <ul style="list-style-type: none"> • Bits per second 9600 • Data bits 8 • Parity None • Stop bits 1 • Flow control None
2	<p>On the Login Screen window, provide the password for user admin.</p> <pre> Login Screen RoamAbout R2 Copyright (c) 2000-2001 Enterasys Networks, Inc. All rights reserved Application Version: 01.02.08 Oct 29 2001, 19:48:44 Username: [admin] Password: [] </pre>

3	<p>On the Main Menu window</p> <ul style="list-style-type: none"> • Select Network Configuration, and press Enter. <pre> Main Menu RoamAbout R2 Application Version: 01.02.08 Network Configuration Wireless Configuration Security and Policy Configuration Serial / Telnet / Web Configuration Current Configuration Counters Reset / Upgrade </pre>
4	<p>On the Network Configuration window</p> <pre> Network Configuration RoamAbout R2 Application Version: 01.02.08 IP Address : [192.16.111.14] Subnet Mask : [255.255.255.0] Default Gateway : [192.16.111.1] MAC Address : [00:01:F4:25:99:54] Spanning Tree : <Disable> BOOTP : <Disable> DHCP : <Disable> Reset : <no reset > MAIN MENU APPLY SAVE HELP Enter Agent IP Address in decimal dot format (e.g., 209.131.209.13) </pre> <ul style="list-style-type: none"> • Provide the following information: <ul style="list-style-type: none"> ○ IP Address = 192.16.6.205 ○ Subnet Mask = 255.255.255.0 ○ Default Gateway = 192.16.6.1 ○ Select APPLY, and press Enter. ○ Select SAVE, and press Enter. ○ Select MAIN MENU, and press Enter.

5	<p>On the Main Menu window</p> <ul style="list-style-type: none"> Select Wireless Configuration, and press Enter. <pre> Main Menu RoamAbout R2 Application Version: 01.02.08 Network Configuration Wireless Configuration Security and Policy Configuration Serial / Telnet / Web Configuration Current Configuration Counters Reset / Upgrade </pre>
6	<p>On the Wireless Configuration window</p> <ul style="list-style-type: none"> Select Set/Show Wireless Configuration, and press Enter. <pre> Wireless Configuration RoamAbout R2 Application Version: 01.02.08 Set/Show Wireless Configuration Encryption Configuration MAIN MENU HELP Display Wireless Configuration </pre>
7	<p>On the Wireless Configuration Slot window</p> <pre> Wireless Configuration Slot: <Radio 1> RoamAbout R2 Application Version: 01.02.08 Spanning Tree Protocol State: Disabled Wireless Network Name: [roam] Station Name: [RoamAbout AP] Channel: <2.4370 GHz (802.11-6) > AP Density: <Low > Transmit Rate: <11 Mbit Auto Rate > RTS Threshold: [0] DTIM Period: [1] Secure Access: <Disabled> Multicast Transmit Rate: < 11 Mbit > IntraBSS Relay Mode: <Enabled > Bridge Mode: < Workgroup > Reset Option: <Reset Radio If Necessary> PREV MENU APPLY SAVE HELP Push Space Bar to toggle values </pre>

	<ul style="list-style-type: none"> • Provide the following information: <ul style="list-style-type: none"> ○ Wireless Network Name ○ Channel ○ AP Density ○ Transmit ○ Multicast Transmit Rate ○ Select APPLY, and press Enter. ○ Select SAVE, and press Enter. ○ Select PREV MENU, and press Enter.
8	<p>On the Wireless Configuration window</p> <ul style="list-style-type: none"> • Select Encryption Configuration, and press Enter. 
9	<p>On the Wireless Encryption Configuration window</p> <ul style="list-style-type: none"> • Select Encryption State, and click the Space bar. 

<p>10</p>	<p>On the Wireless Encryption Configuration sub-window</p> <pre> Wireless Encryption Configuration RoamAbout R2 Application Version: 01.02.08 Radio Slot: <Radio 1> Encryption State: <Enabled > Encryption Key 1: [XXXXXXXXXXXXXXXXXXXXXXXXXXXXXXXXXXXX] Encryption Key 2: [Encryption Key 3: [Encryption Key 4: [Transmit Key ID: <1> Exclude Unencrypted: <Enabled > Reset Option: <Reset Radio If Necessary> PREV MENU APPLY SAVE HELP </pre> <ul style="list-style-type: none"> • Type in the encryption key. • Select Apply, and press Enter. • Select SAVE, and press Enter. • Select PREV MENU, and press Enter.
<p>11</p>	<ul style="list-style-type: none"> • From the Wireless Configuration window, select MAIN MENU, and press Enter. • From the MAIN MENU window, select Reset / Upgrade, and press Enter. • The Reset / Upgrade window will be displayed. <pre> Reset / Upgrade RoamAbout R2 Application Version: 01.02.08 Reset Switch Reset Switch with Factory Defaults Reset Radio Upgrade Flash MAIN MENU HELP </pre> <ul style="list-style-type: none"> • Select Reset Switch to reconfigure the RoamAbout using the current configuration.

10. Configuring the Symbol Spectrum 24

Steps	Description
1	<p>Using a console cable, connect the Spectrum 24 to the PC.</p> <p>Start a HyperTerminal session to the Spectrum 24.</p> <ul style="list-style-type: none"> • Bits per second 19200 • Data bits 8 • Parity None • Stop bits 1 • Flow control None`
2	<p>On the MAIN MENU window</p> <div style="background-color: #e0e0e0; padding: 10px; border: 1px solid #ccc;"> <pre> AP-4131 MAIN MENU Show System Summary AP Installation Show Interface Statistics Special Functions Show Forwarding Counts Set System Configuration Show Mobile Units Set RF Configuration Show Known APs Set Access Control List Show Ethernet Statistics Set Address Filtering Show RF Statistics Set Type Filtering Show Misc. Statistics Set SNMP Configuration Show Event History Set Event Logging Configuration Enter Admin Mode </pre> </div> <ul style="list-style-type: none"> • Select AP Installation, and press Enter. • Enter the System Password. The default password is Symbol. (Case Sensitive) • The Access Point Installation window will be displayed.

<p>3</p>	<p>On the Access Point Installation window</p> <pre> AP-4131 Access Point Installation Country Config-[CR] USA Unit Name AP-4131 IP Address 100.4.4.56 Gateway IP Address 100.4.4.4 .Additional Gateways 0.0.0.0 0.0.0.0 Subnet Mask 255.255.255.0 0.0.0.0 0.0.0.0 0.0.0.0 0.0.0.0 DNS IP Address 0.0.0.0 0.0.0.0 Net_ID (ESS) symbol Antenna Selection Full Diversity .Additional DNS DHCP/BOOTP Disabled 0.0.0.0 0.0.0.0 OK-[CR] Save-[F1] Save All APs-[F2] Cancel-[ESC] (Most parameters take effect only after being saved and AP is reset) </pre> <ul style="list-style-type: none"> • Provide the following information: <ul style="list-style-type: none"> ○ IP Address = 192.16.6.205 ○ Gateway IP Address = 192.16.6.1 ○ Subnet Mask = 255.255.255.0 ○ Select Save-[F1], and press Enter.
<p>4</p>	<p>On the MAIN MENU window</p> <ul style="list-style-type: none"> • Select Special Functions, and press Enter. • The Special Functions Menu window will be displayed.

5

On the **Special Functions Menu** window

```
AP-4131
Special Functions Menu

Clear All Statistics           Restore Factory Config.
Clear MU Table                Save Configuration
Clear ACL                     Save Config. to All APs
Clear Address Filters
Clear Type Filters           Firmware Update Menu-[F3]

Load ACL from File via TFTP
Load ACL from File via XMODEM
Load ACL from MU List

Reset AP

Security Configuration:
Configure Kerberos
Configure EAP
Configure WEP Encryption
Configure Network Time

Exit-[ESC]
```

- Select **Configure WEP Encryption** and press **Enter** - This step is needed if WEP Encryption is going to be used.
- The **WEP Encryption Configuration** window will be displayed.

6

On the **WEP Encryption Configuration** window

```
AP-4131
WEP Encryption Configuration

.Shared Key           Enabled
.Key Width           128 bit
.Encryption Key ID   1

Encryption Key Maintenance

OK-[CR]           Save-[F1]           Save All APs-[F2]           Cancel-[ESC]
```

- Select **Shared Key, Enabled**, using the **Space bar**.
- Select **Key Width, 128 bit**, using the **Space bar**.
- Provide **Encryption Key ID** - This Key ID will be utilized during the Avaya 3606 Wireless Telephone configuration.
- Select **Encryption Key Maintenance**, and press **Enter**.

7	<p>On the Encryption Key Maintenance window</p> <pre> AP-4131 Encryption Key Maintenance PassKey ***** .Key 1 * 00000 00000 0000 0000 0000 0000 .Key 2 00000 00000 0000 0000 0000 0000 .Key 3 00000 00000 0000 0000 0000 0000 .Key 4 00000 00000 0000 0000 0000 0000 * = Active Key Note: This screen has WRITE-ONLY access. Keys can be set but not displayed. Zeros are displayed to indicate field sizes. A line containing all zeros allows the corresponding key to remain unchanged. OK-[CR] Save-[F1] Save All APs-[F2] Cancel-[ESC] Enter a 4 to 32 character string, from which the WEP Keys will be derived. </pre> <ul style="list-style-type: none"> • Type in the encryption key for the active key ID. The default key type for Spectrum 24 is Hexadecimal. • Select Save-[F1], and press Enter. • Go back to the Special Functions Menu window by pressing the Esc key.
8	<p>On the Special Function Menu window</p> <ul style="list-style-type: none"> • Select Reset AP and press the Enter key. This will reconfigure the AP with current settings.

11. Verification Steps

The configurations shown in these Application Notes were verified in the Solution and Interoperability Test Lab. To verify that the configuration was implemented correctly, place calls from the Avaya 3606 Wireless Telephone to the digital and IP Telephones. The calls will complete correctly and a two-way audio path between the telephones will be established.

12. Conclusion

These Application Notes illustrate how to configure Avaya and other vendor's Access Points to interoperate with Avaya 3606 Wireless Telephone. The APs verified were: Avaya AP-II, AP-III, Cisco Aironet 340, Symbol Spectrum 24 and Enterasys RoamAbout 2000. Both methods of IP address assignment, static and DHCP, were configured and verified with the Avaya 3606 Wireless telephone.

© 2003 Avaya Inc. All Rights Reserved.

Avaya and the Avaya Logo are trademarks of Avaya Inc. All trademarks identified by ® and ™ are registered trademarks or trademarks, respectively, of Avaya Inc. All other trademarks are the property of their respective owners. The information provided in these Application Notes is subject to change without notice. The configurations, technical data, and recommendations provided in these Application Notes are believed to be accurate and dependable, but are presented without express or implied warranty. Users are responsible for their application of any products specified in these Application Notes.

Please e-mail any questions or comments pertaining to these Application Notes along with the full title and filename, located in the lower the right corner, directly to the Avaya Solution & Interoperability Test Lab at interoplabnotes@list.avaya.com